

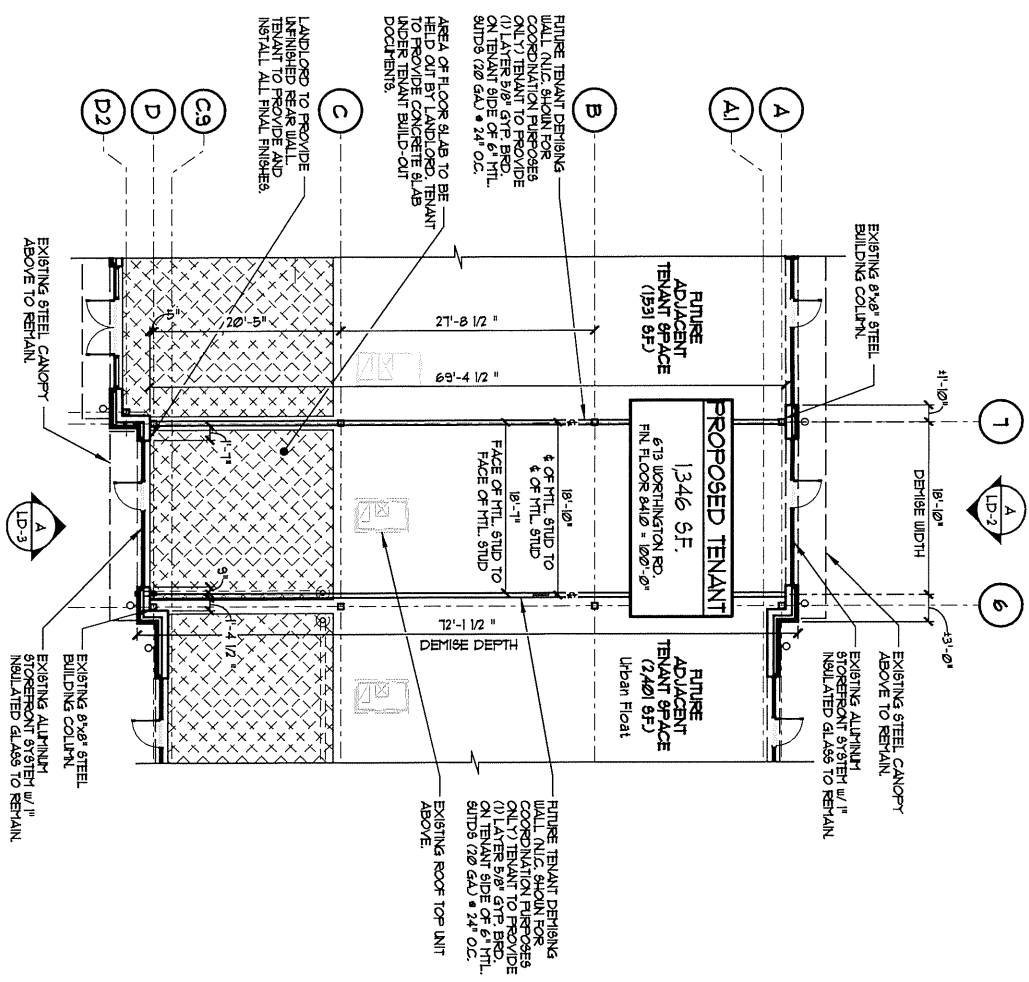


WESTAR NEIGHBORHOOD RETAIL CENTER
Polaris, Ohio

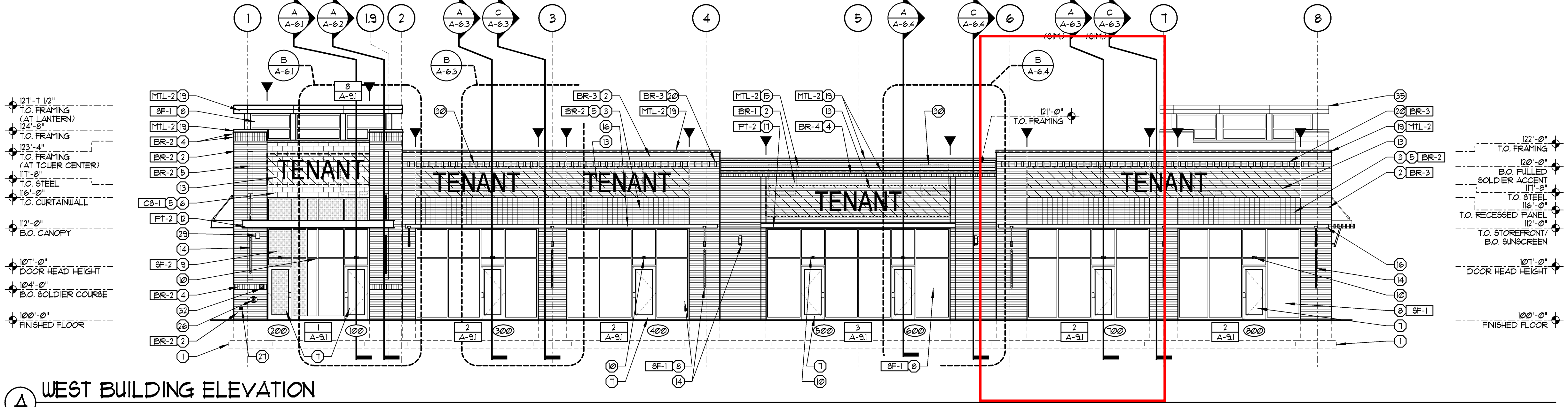


TENANT LEASE PLAN -

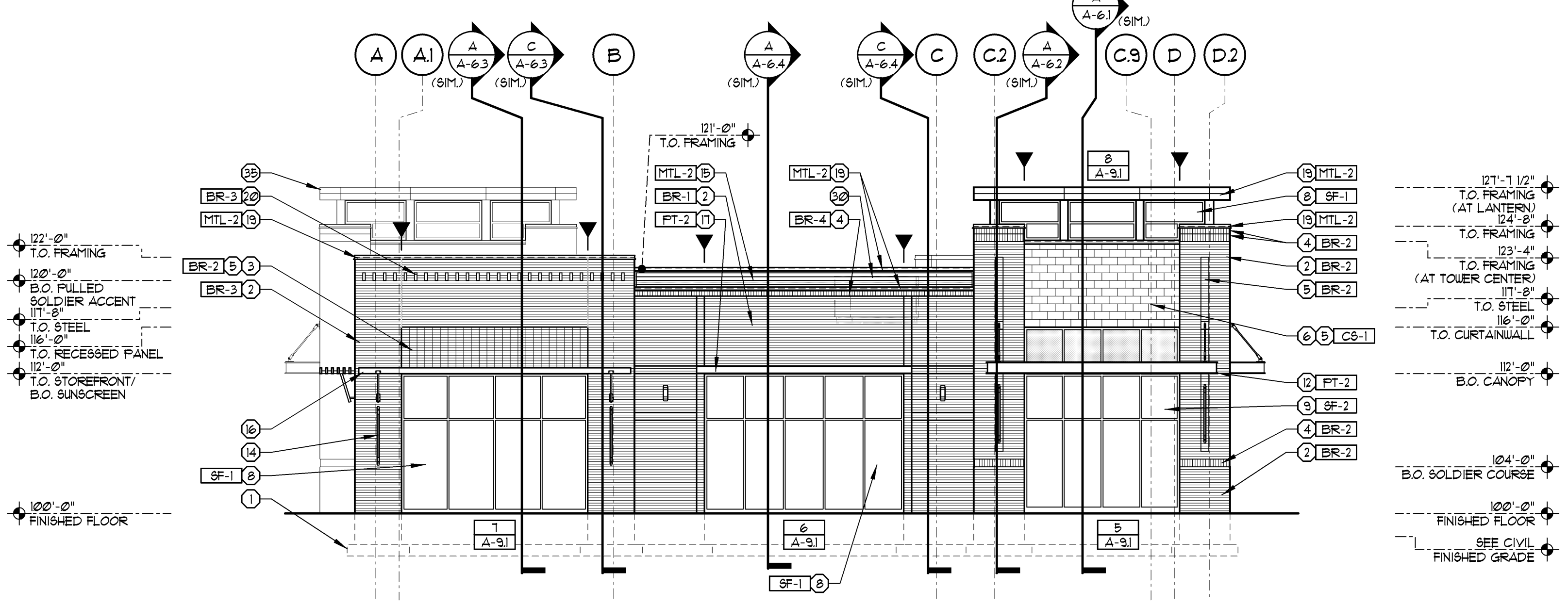
SCALE 3/32" = 1'-0"



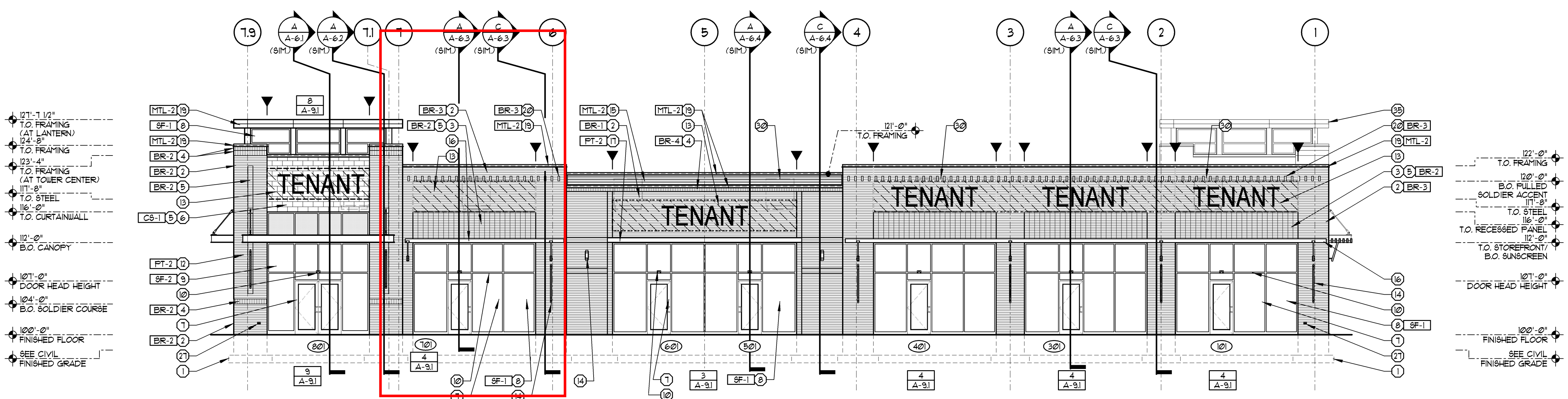
FORD & ASSOCIATES ARCHITECTS 1500 WEST FIRST AVENUE COLUMBUS, OHIO 43212 614.488.6252 614.488.9963 (Fax)	WESTAR RETAIL BUILDING 'B' 677 WORTHINGTON ROAD, WESTERVILLE, OHIO 43082 For N.P. Limited Partnership 8800 Lyra Drive, Suite 500, Columbus, Ohio 43240-2002		MODIFIES SHEET: PROJECT NUMBER: 1607104 DATE: FEB 8, 2018 SHEET NO:
			LD-1F



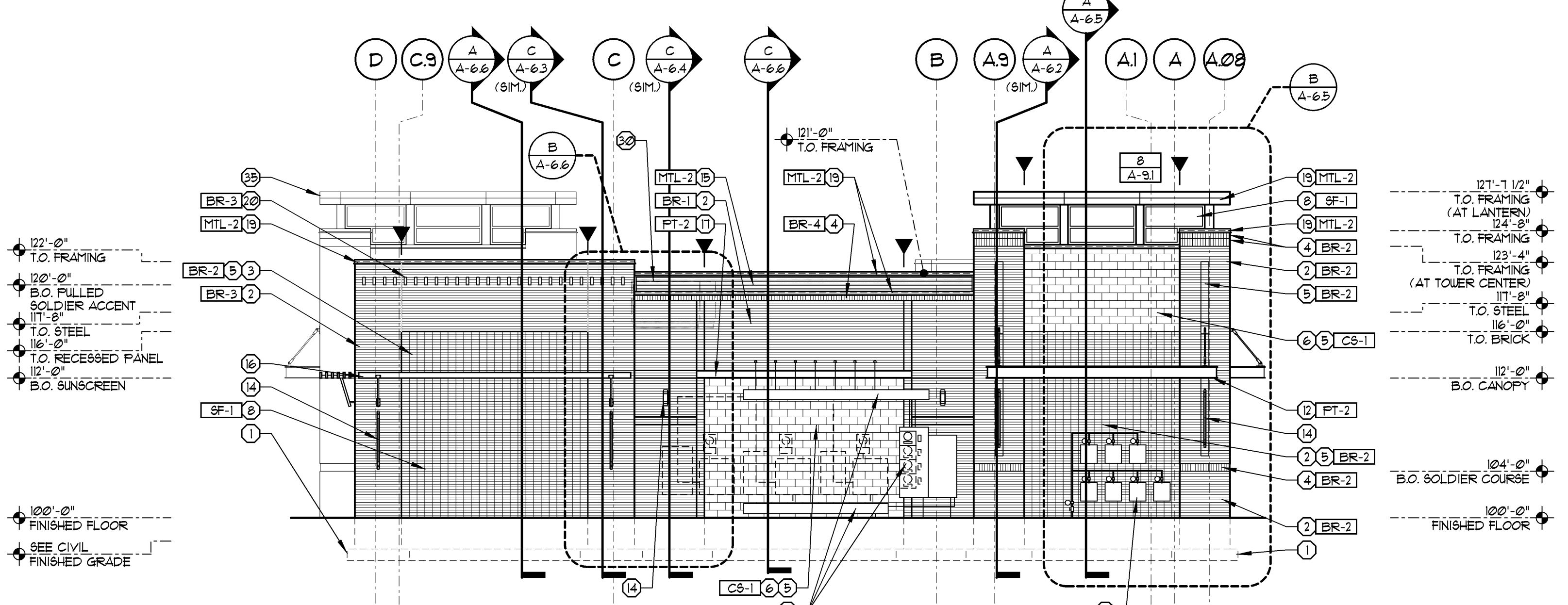
A WEST BUILDING ELEVATION
 SCALE 1/8" = 1'-0"



B SOUTH BUILDING ELEVATION
 SCALE 1/8" = 1'-0"



C EAST BUILDING ELEVATION
 SCALE 1/8" = 1'-0"



D NORTH BUILDING ELEVATION
 SCALE 1/8" = 1'-0"

SYMBOL LEGEND

(X)	ELEVATION CODED NOTE TAG (SEE SHEET A-21 FOR SCHEDULE)
(XX)	DOOR NUMBER TAG (SEE SHEET A-81 FOR DOOR SCHEDULE)
X	STOREFRONT SYSTEM TAG (SEE SHEET A-91 FOR STOREFRONT ELEVATIONS)
XXX	MATERIAL / FINISH TAG (SEE SHEET A-21 FOR FINISH SCHEDULE)
—	CONTROL JOINT (SEE DETAILS P/A-13)

ELEVATION CODED NOTES

1	LINE OF CONCRETE FOOTING / CMU FOUNDATION	26	PREFINISHED CONTINUOUS METAL (24 GA) FASCIA EDGE FLASHING
2	BRICK VENEER, RUNNING BOND	27	SINGLE SOLDIER BRICK, FULL 1/2"
3	BRICK VENEER, STACK BOND	28	DECORATIVE METAL RAILING, PAINT, FT-2
4	BRICK VENEER, SOLDIER ACCENT COURSE	29	STRUCTURAL PATIO WALL, SEE LANDSCAPE SHEETS
5	RECESSED BRICK/MASONRY PANEL 1/2"	30	CEDAR DUMPS/TER GATES w/ GALV. STEEL PIPE FRAME, PROVIDE STEEL LATCH AND VERT. FIN AT EACH DOOR
6	MANUFACTURED CAST STONE VENEER, RUNNING BOND	31	CEDAR WOOD TRELLIS PANELS w/ 1/4" 2" FACE OF BUILDING (SEE DETAIL C/A-6.2 AND LANDSCAPE SHEETS)
7	3'-0" x 1'-0" MEDIUM-STILE, FULL LITE ALUMINUM ENTRANCE DOOR w/ 1" INSULATED TEMPERED GLASS	32	MEDIUM PRESSURE GAS SERVICE AND METER SETS, (SEE PLUMBING SHEETS), PAINT, PT-1
8	2 1/2" x 4 1/2" ALUMINUM STOREFRONT SYSTEM AS SCHEDULED, SEE SHEET A-91	33	FIRE DEPARTMENT CONNECTION MOUNT ON ADDRESS SIDE OF BUILDING, COORDINATE FINAL LOCATION WITH A.U. AND OWNER'S REP. (SEE FIRE PROTECTION SHEETS)
9	2 1/2" x 6" - ALUMINUM CURTAIN WALL SYSTEM AS SCHEDULED, SEE SHEET A-91	34	FROST-PROOF HOSE BIBS (SEE PLUMBING SHEETS), ENSURE ALL PIPING IS WITHIN THE BUILDING THERMAL ENVELOPE
10	EMERGENCY EGRESS EXIT (DISCHARGE) LIGHT, CENTER ABOVE DOOR	35	ELECTRIC SERVICE WIREWAY AND METER SET (SEE ELECTRICAL SHEETS), PAINT, PT-1
11	PREFINISHED METAL COLUMN WRAP TO MATCH STOREFRONT FRAMING, SEE DETAIL P/A-41	36	WATERPROOF LOCK/STROBE MOUNT AT 11'-0" AFF. (SEE ELECTRICAL SHEETS)
12	STEEL CANOPY, PAINT	37	LINE OF ROOFTOP HVAC EQUIPMENT BEYOND (SEE MECHANICAL SHEETS)
13	HATCHED AREA INDICATES AREA OF CONTRACTOR (INSTALLED 5/8" FRT. FLYWOOD IN LIEU OF TYPICAL GYPSUM SHEATHING AT TENANT SIGNAGE AREA. TYPICAL SIGNAGE TO BE PART OF TENANT IMPROVEMENT PACKAGE (N.I.C.))	38	THRU-WALL 6" OVERFLOOR DRAIN w/ LAMB'S TONGUE OVERFLOW FITTING w/ INSECT SCREEN (SEE PLUMBING SHEETS), MOUNT AT 2'-0" AFF.
14	DECORATIVE WALL MOUNTED LIGHT FIXTURE, SEE ELECTRICAL SHEETS	39	FIRE DEPARTMENT ACCESS KNOX BOX, MOUNT AT 64" AFF. SEE SPECIFICATIONS
15	1/8" PREFINISHED CORRUGATED METAL SIDING, ORIENTED HORIZONTALLY, (DIMENSIONAL METALS INC. 'HUP-16')	40	VENEER CONTROL JOINT, SEE DETAILS ON SHEET P/A-13, MATCH COLOR OF BEAM TO ADJACENT MASONRY
16	PREFINISHED ALUMINUM SUNSCREEN ('CHARCOAL') TO MATCH STOREFRONT WITH PREFINISHED BLACK STEEL BRACKETS	41	WALL PACK LIGHT FIXTURE AT 16'-0" AFF. TYPICAL OF 3 SEE ELECTRICAL SHEETS
17	GALVANIZED STEEL C CHANNEL PAINT, SEE SECTIONS	42	LINE OF ROOF BEYOND
18	INSULATED HOLLOW METAL SURFACE DOOR FRAME, SEE DOOR SCHEDULE, SHEET A-81, PAINT (PT-1), PROVIDE LOOSE ANGLE LINTEL w/ HEAD, PAINT, PT-2		

EXTERIOR MATERIAL FINISH KEY

MARK	MANUFACTURER	DESCRIPTION	REMARKS
MODULAR BRICK VENEER			
BR-1	PINE HALL	SPEKTRA SERIES- 'PLATINUM'	MORTAR- FLAMINGO BRICKMENT, COLOR- 'OLD COLONIAL'
BR-2	PINE HALL	SPEKTRA SERIES- 'FEWTER'	MORTAR- FLAMINGO BRICKMENT, COLOR- 'OLD COLONIAL'
BR-3	BORAL MODULAR	FREEDOM COLLECTION- 'CRIMSON'	MORTAR- FLAMINGO BRICKMENT, COLOR- 'OLD COLONIAL'
BR-4	BORAL MODULAR	FREEDOM COLLECTION- 'GIDEAL'	MORTAR- FLAMINGO BRICKMENT, COLOR- 'OLD COLONIAL'
MANUFACTURED CAST STONE			
CS-1	ROCKCAST	CUSTOM CAST STONE SERIES, SLATE NOT 8" H x 16" W 4" D.	SMOOTH FINISH, RUNNING BOND
CS-2	ROCKCAST	CUSTOM CAST STONE SERIES, SLATE PIER CAP, 8" W x 16" H x 4" D.	NATURAL STONE w/ SLOPED ('TAPERED') PROFILE PROVIDE SAMPLE FOR APPROVAL
CS-3	ROCKCAST	CUSTOM CAST STONE SERIES, WHEATSTONE BASE, NOT 8" H x 24" W x 4" D.	SMOOTH FINISH, RUNNING BOND PROVIDE SAMPLE FOR APPROVAL
METAL COPING, FLASHING, DOWNSPOUTS			
MTL-1	DM1	DYNACLAD PVDF PAINT FINISH 'METALLIC COPPER'	DIMENSIONAL METALS, INC.
MTL-2	DM1	DYNACLAD PVDF PAINT FINISH 'CLASSIC BRONZE'	DIMENSIONAL METALS, INC.
PAINT			
PT-1	SHERWIN WILLIAMS	SU2807 'ROCKWOOD MEDIUM BROWN'	SEMI-GL055
PT-2	SHERWIN WILLIAMS	'MATCH STOREFRONT CHARCOAL' FINISH COLOR	SEMI-GL055
STOREFRONT SYSTEM			
SF-1	KAUNEER	2 1/2" x 4 1/2" TRIFAB V6 49T COLOR- 'CHARCOAL'	
SF-2	KAUNEER	2 1/2" x 6" - 1600 ALUMINUM CURTAIN WALL COLOR- 'CHARCOAL'	
STAIN			
ST-1	SHERWIN WILLIAMS	WOODSCAPES EXTERIOR ACRYLIC SOLID COLOR STAIN	PEPPERIDGE #3U 3011

WESTAR RETAIL BUILDING 'B'
 Phase III Development - Westar Neighborhood Retail Center
 677 Worthington Road, Westerville, Ohio 43082
 For N.P. Limited Partnership
 8800 Lyra Drive, Suite 550, Columbus, Ohio 43240-2002

ISSUE REVISION DATE

PRELIMINARY		FEB 24, 2016
OWNER REVIEW		MAR 18, 2016
ISSUE		APR 15, 2016
BID		JUL 8, 2016
PERMIT		JUL 8, 2016

BUILDING 'B' ELEVATIONS
 PHASE II DEVELOPMENT
A-2.1
 SHELL BUILDING 'B'



1800lopbate.com